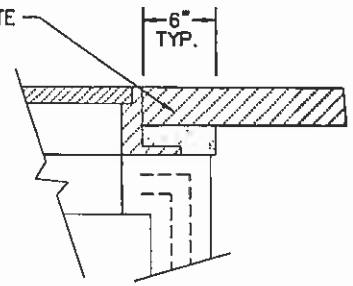


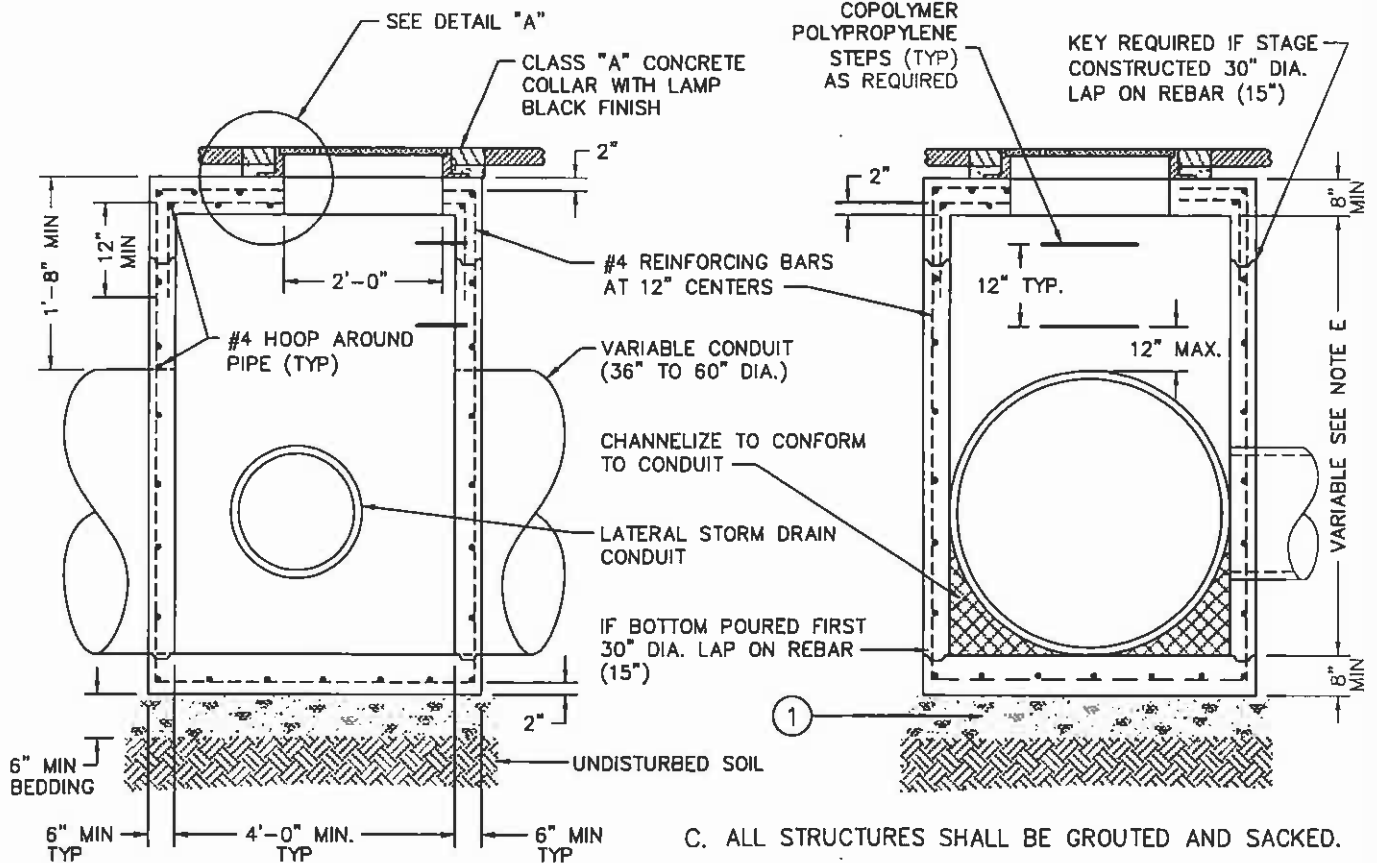
#4 REBARS AT 45 DEGREES  
CENTERED IN SLAB

#4 REINFORCING BARS AT  
12" CENTERS, TOP AND  
BOTTOM OF SLAB.

CLASS "A" CONCRETE  
COLLAR W/2" A.C.



**DETAIL "A"**



① MINIMUM SIX (6) INCHES OF 3/4 INCH CRUSHED ROCK PER ASTM D448 #67 COMPACTED TO 95% RELATIVE COMPACTION.

**NOTES:**

- A. MANHOLE FRAME AND COVER SHALL BE D&L SUPPLY, 1024 MARKED "STORM DRAIN".
- B. ALL CONCRETE SHALL BE CLASS "A".

- C. ALL STRUCTURES SHALL BE GROUTED AND SACKED.
- D. JUNCTION BOXES FOR PIPES OVER 60 INCHES IN DIAMETER WILL BE OF SPECIAL DESIGN.
- E. IF DEPTH FROM PIPE FLOW LINE TO TOP OF CURB IS 8 FEET OR MORE, INCREASE WALL THICKNESS TO A MINIMUM OF 8 INCHES.
- F. GRADE RING(S), 2-FOOT INSIDE DIAMETER, 18" MAXIMUM HEIGHT MAY BE INSTALLED ON THE JUNCTION BOX ACCESS OPENING TO FINISH GRADE.

**THE CITY OF WEST SACRAMENTO – STANDARD DETAIL**

APPROVED BY:  CITY ENGINEER  
C-38733 P.E. NO.  
3/31/05 DATE

REVISION:	
REVISION:	
REVISION:	
REVISION:	

TITLE:  
**STORM DRAIN  
JUNCTION BOX**

STANDARD  
DETAIL #: 305

